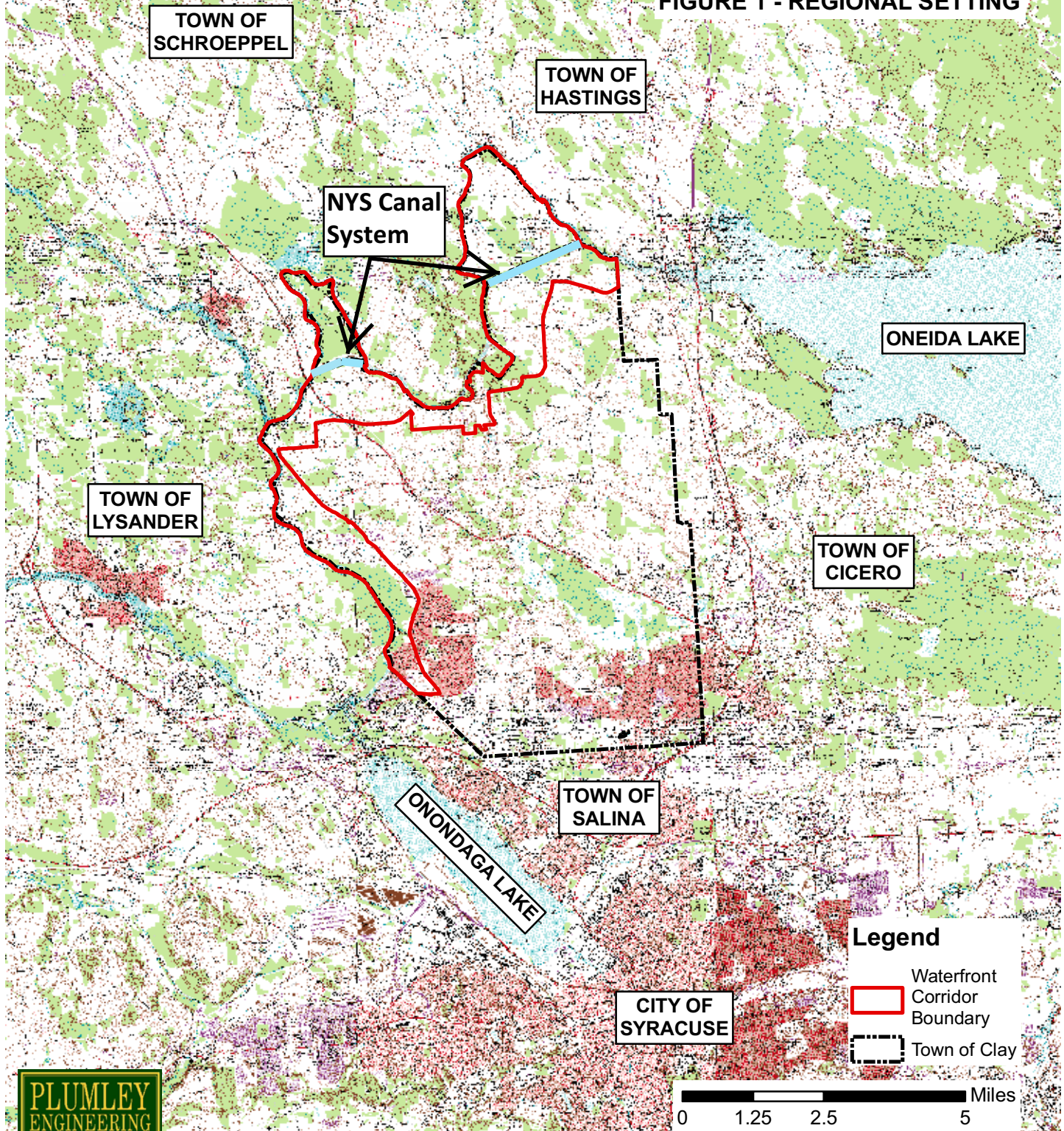


TOWN OF CLAY - LOCAL WATERFRONT REVITALIZATION PROGRAM



FIGURE 1 - REGIONAL SETTING



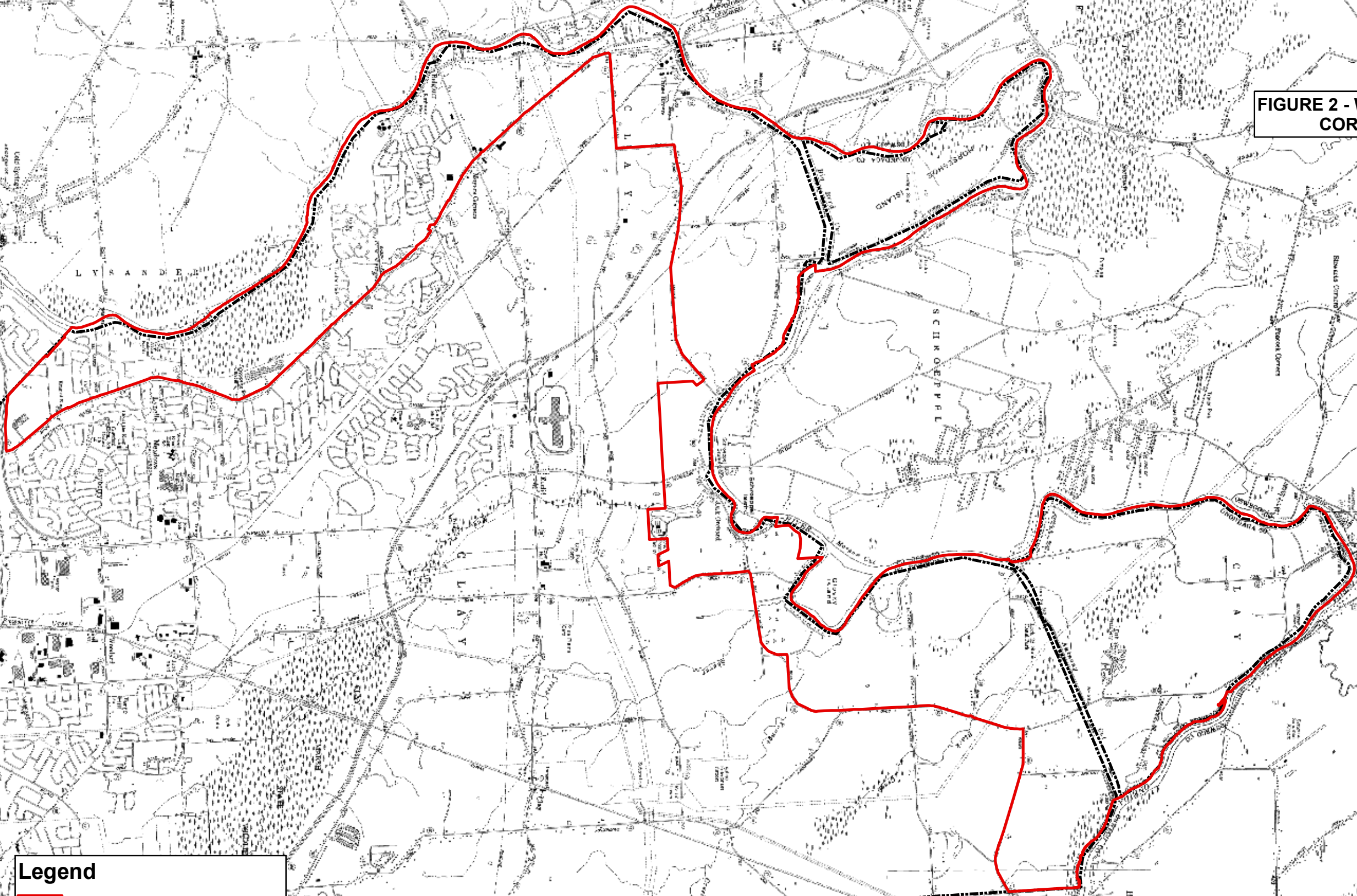
2006225
February 2008

USGS Topographic Maps - Baldwinsville, Brewerton, Central Square, Syracuse West, Camillus, Cicero, Mallory, Pennellville, and Syracuse East 7.5-Minute Quads.



TOWN OF CLAY - LOCAL WATERFRONT REVITALIZATION PROGRAM



FIGURE 2 - WATERFRONT CORRIDOR

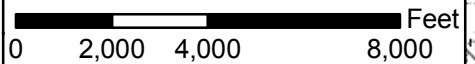


Legend

-  Waterfront Corridor Boundary
-  Town of Clay



2006225
February 2008



DOT Topographic Maps, Planimetric Data - Baldwinsville, Brewerton, Central Square, Syracuse West, Camillus, and Pennellville 7.5-Minute Quads.

TOWN OF CLAY - LOCAL WATERFRONT REVITALIZATION PROGRAM

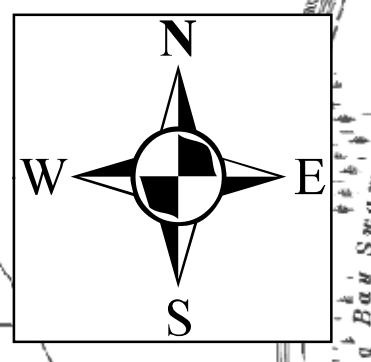
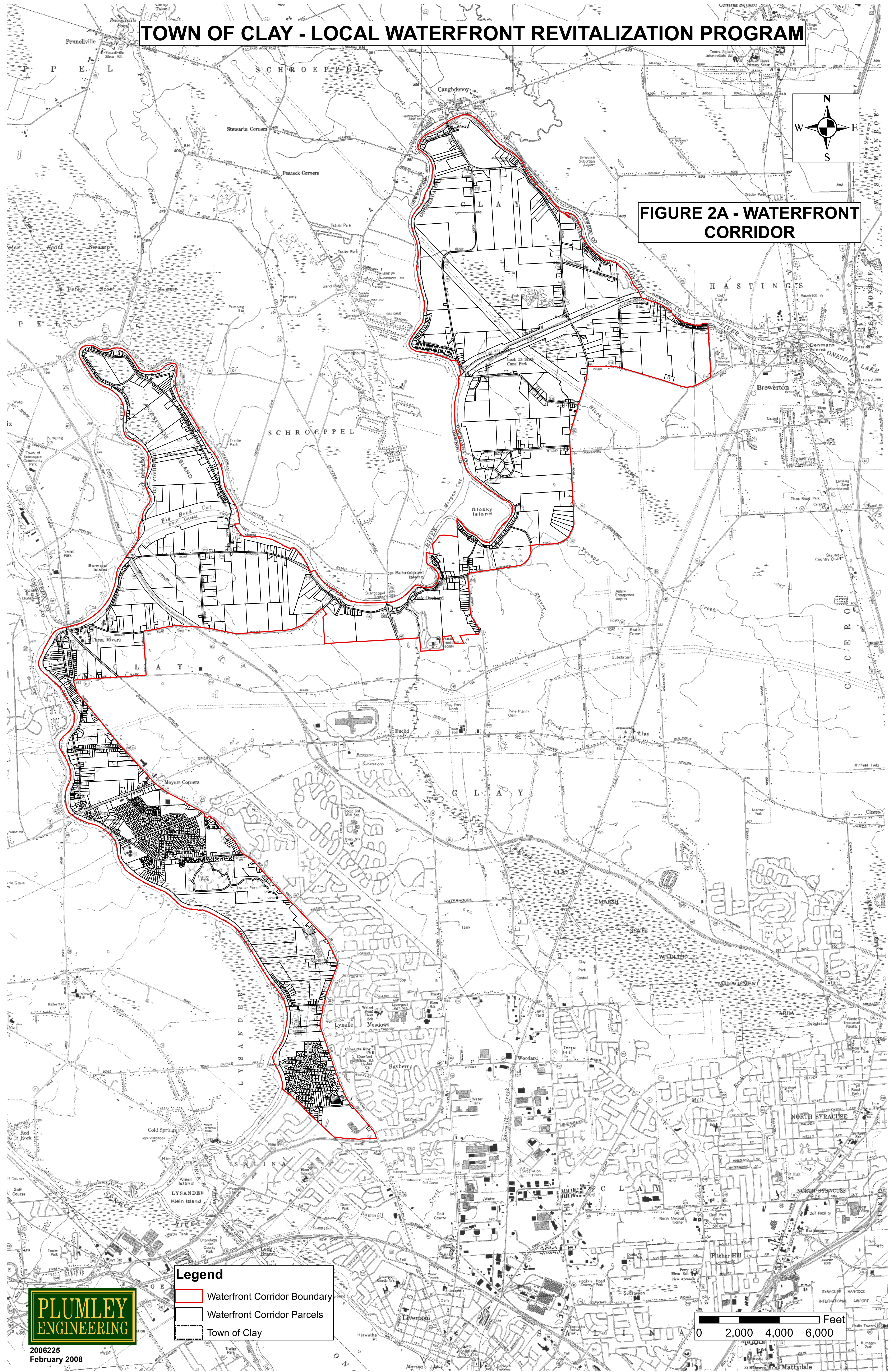
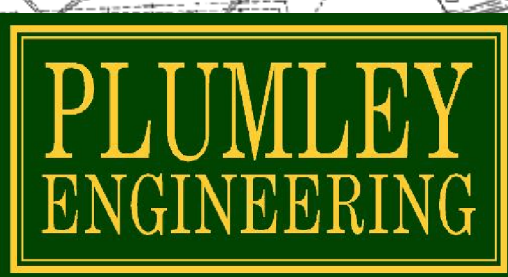


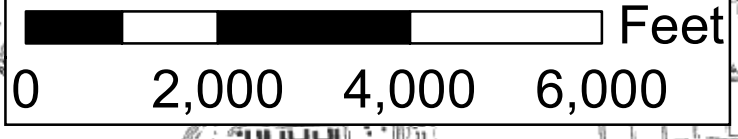
FIGURE 2A - WATERFRONT CORRIDOR



- Legend**
- Waterfront Corridor Boundary
 - Waterfront Corridor Parcels
 - Town of Clay

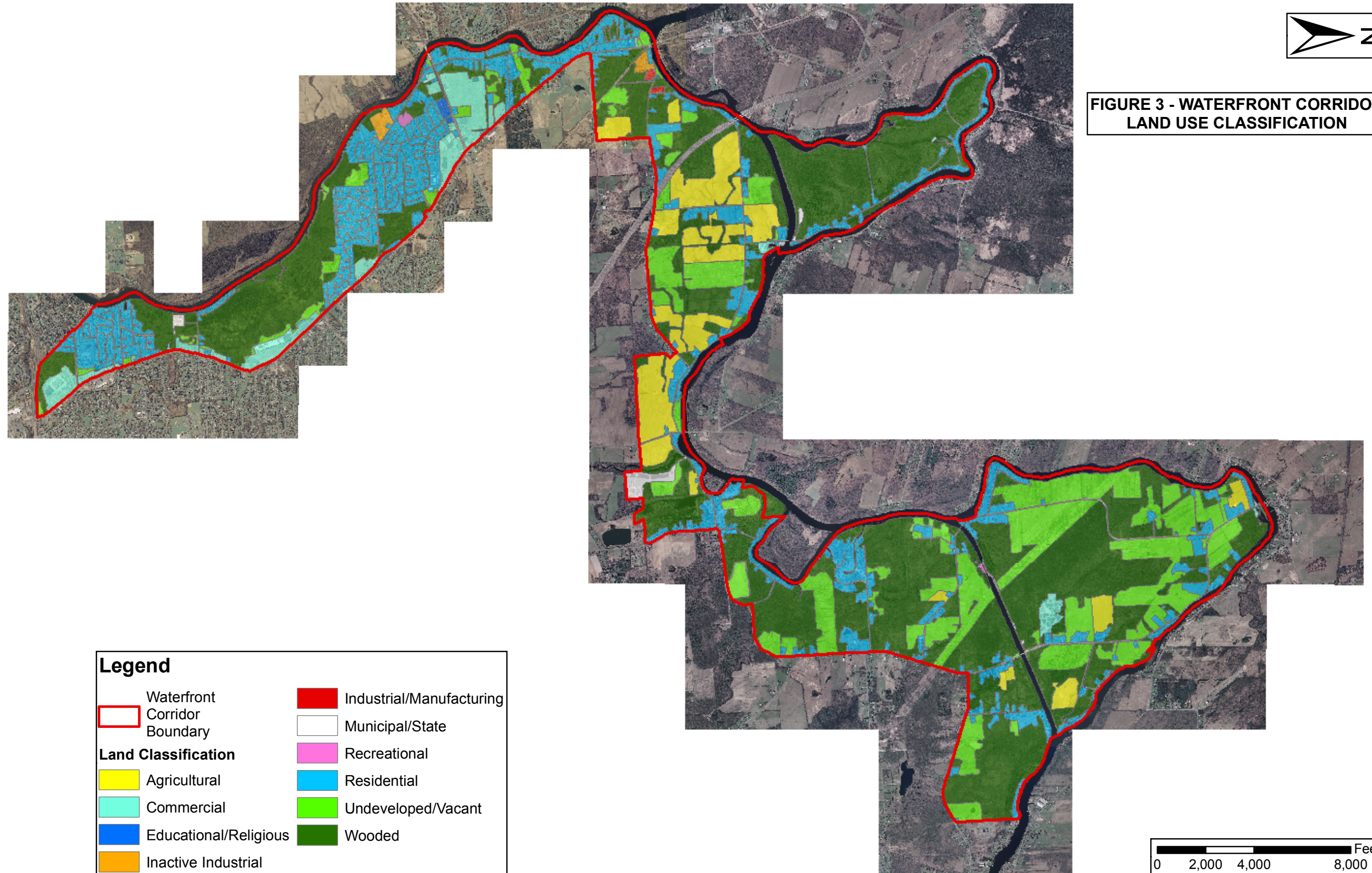


2006225
February 2008














Town of Clay Parcel Data Provided by the Town of Clay.
DOT Topographic Maps, Planimetric Data - Baldwinsville, Brewerton, Central Square, Syracuse West, Camillus, and Pennellville 7.5-Minute Quads.

TOWN OF CLAY - LOCAL WATERFRONT REVITALIZATION PROGRAM

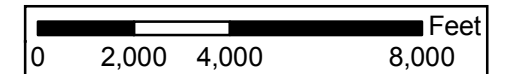


**FIGURE 3 - WATERFRONT CORRIDOR
LAND USE CLASSIFICATION**

Legend	
	Waterfront Corridor Boundary
	Agricultural
	Commercial
	Educational/Religious
	Inactive Industrial
	Industrial/Manufacturing
	Municipal/State
	Recreational
	Residential
	Undeveloped/Vacant
	Wooded



2006225
February 2008



TOWN OF CLAY - LOCAL WATERFRONT REVITALIZATION PROGRAM

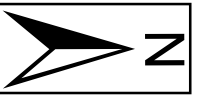
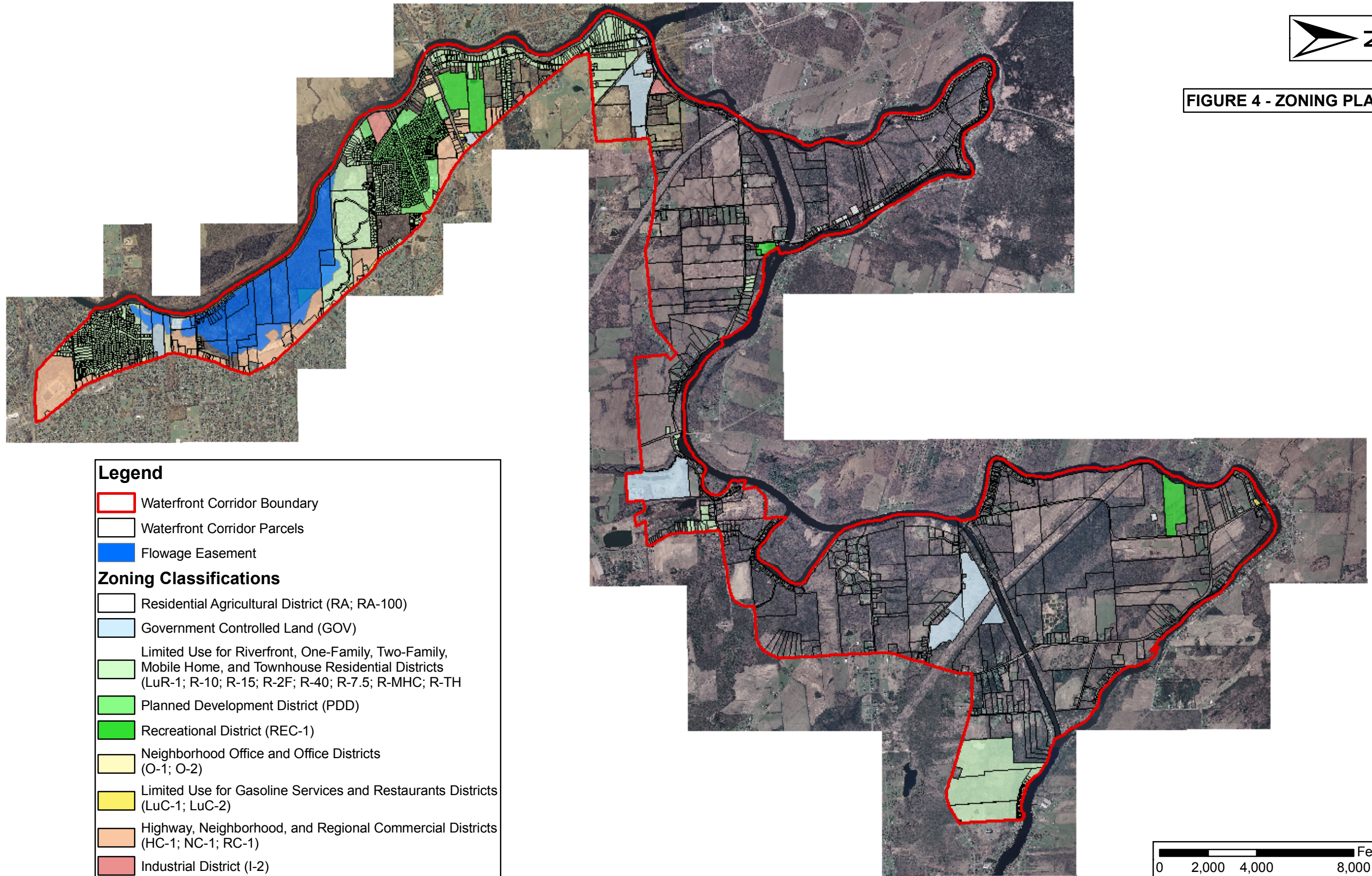


FIGURE 4 - ZONING PLAN



Legend

- Waterfront Corridor Boundary
- Waterfront Corridor Parcels
- Flowage Easement

Zoning Classifications

- Residential Agricultural District (RA; RA-100)
- Government Controlled Land (GOV)
- Limited Use for Riverfront, One-Family, Two-Family, Mobile Home, and Townhouse Residential Districts (LuR-1; R-10; R-15; R-2F; R-40; R-7.5; R-MHC; R-TH)
- Planned Development District (PDD)
- Recreational District (REC-1)
- Neighborhood Office and Office Districts (O-1; O-2)
- Limited Use for Gasoline Services and Restaurants Districts (LuC-1; LuC-2)
- Highway, Neighborhood, and Regional Commercial Districts (HC-1; NC-1; RC-1)
- Industrial District (I-2)



2006225
February 2008

Flowage Easements Provided by the New York State Canal Corporation.
Town of Clay Zoning and Parcel Data Provided by the Town of Clay.

TOWN OF CLAY - LOCAL WATERFRONT REVITALIZATION PROGRAM

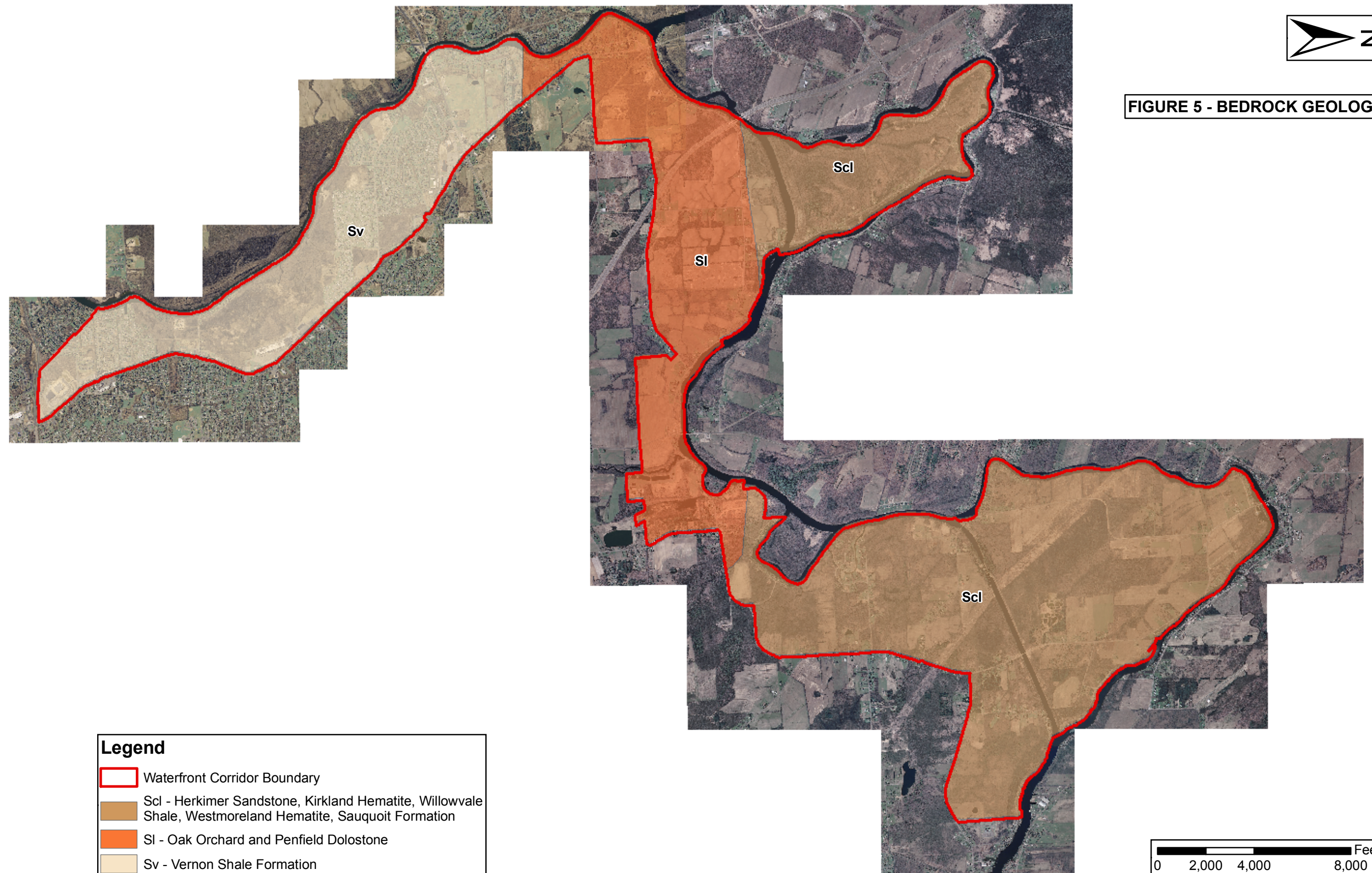






FIGURE 5 - BEDROCK GEOLOGY

Legend

-  Waterfront Corridor Boundary
-  Scl - Herkimer Sandstone, Kirkland Hematite, Willowvale Shale, Westmoreland Hematite, Sauquoit Formation
-  SI - Oak Orchard and Penfield Dolostone
-  Sv - Vernon Shale Formation



2006225
February 2008

TOWN OF CLAY - LOCAL WATERFRONT REVITALIZATION PROGRAM

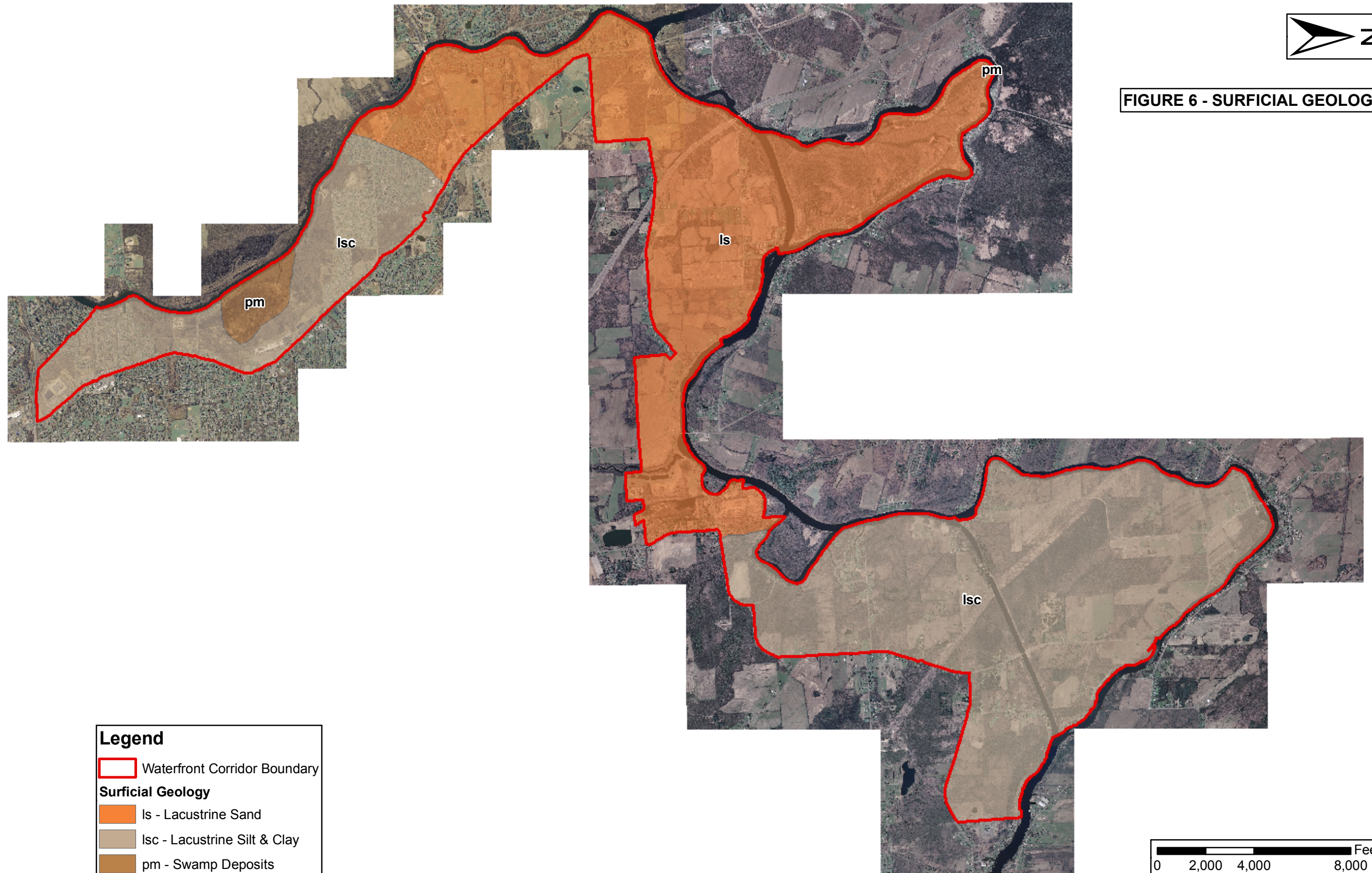






FIGURE 6 - SURFICIAL GEOLOGY

Legend

-  Waterfront Corridor Boundary
- Surficial Geology**
-  Is - Lacustrine Sand
-  lsc - Lacustrine Silt & Clay
-  pm - Swamp Deposits



2006225
February 2008

TOWN OF CLAY - LOCAL WATERFRONT REVITALIZATION PROGRAM

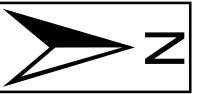
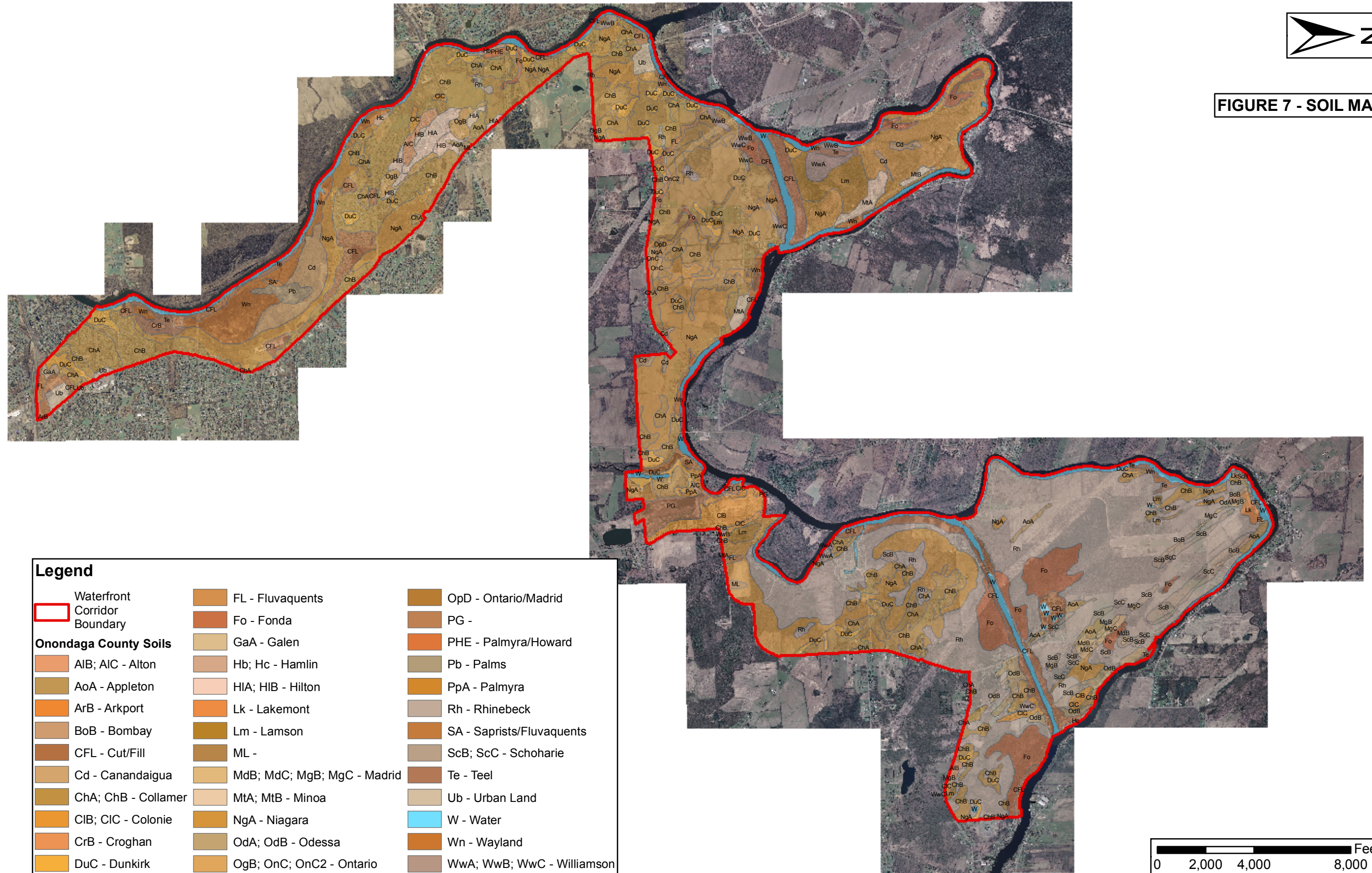


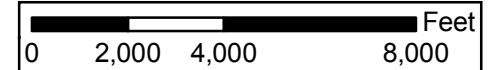
FIGURE 7 - SOIL MAP



Legend		
	Waterfront Corridor Boundary	
	Onondaga County Soils	
	AIB; AIC - Alton	
	AoA - Appleton	
	ArB - Arkport	
	BoB - Bombay	
	CFL - Cut/Fill	
	Cd - Canandaigua	
	ChA; ChB - Collamer	
	CIB; CIC - Colonie	
	CrB - Croghan	
	DuC - Dunkirk	
	FL - Fluvaquents	
	Fo - Fonda	
	GaA - Galen	
	Hb; Hc - Hamlin	
	HIA; HIB - Hilton	
	Lk - Lakemont	
	Lm - Lamson	
	ML -	
	MdB; MdC; MgB; MgC - Madrid	
	MtA; MtB - Minoa	
	NgA - Niagara	
	OdA; OdB - Odessa	
	OgB; OnC; OnC2 - Ontario	
	OpD - Ontario/Madrid	
	PG -	
	PHE - Palmyra/Howard	
	Pb - Palms	
	PpA - Palmyra	
	Rh - Rhinebeck	
	SA - Saprists/Fluvaquents	
	ScB; ScC - Schoharie	
	Te - Teel	
	Ub - Urban Land	
	W - Water	
	Wn - Wayland	
	WwA; WwB; WwC - Williamson	



2006225
February 2008



TOWN OF CLAY - LOCAL WATERFRONT REVITALIZATION PROGRAM

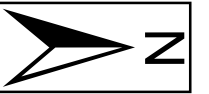
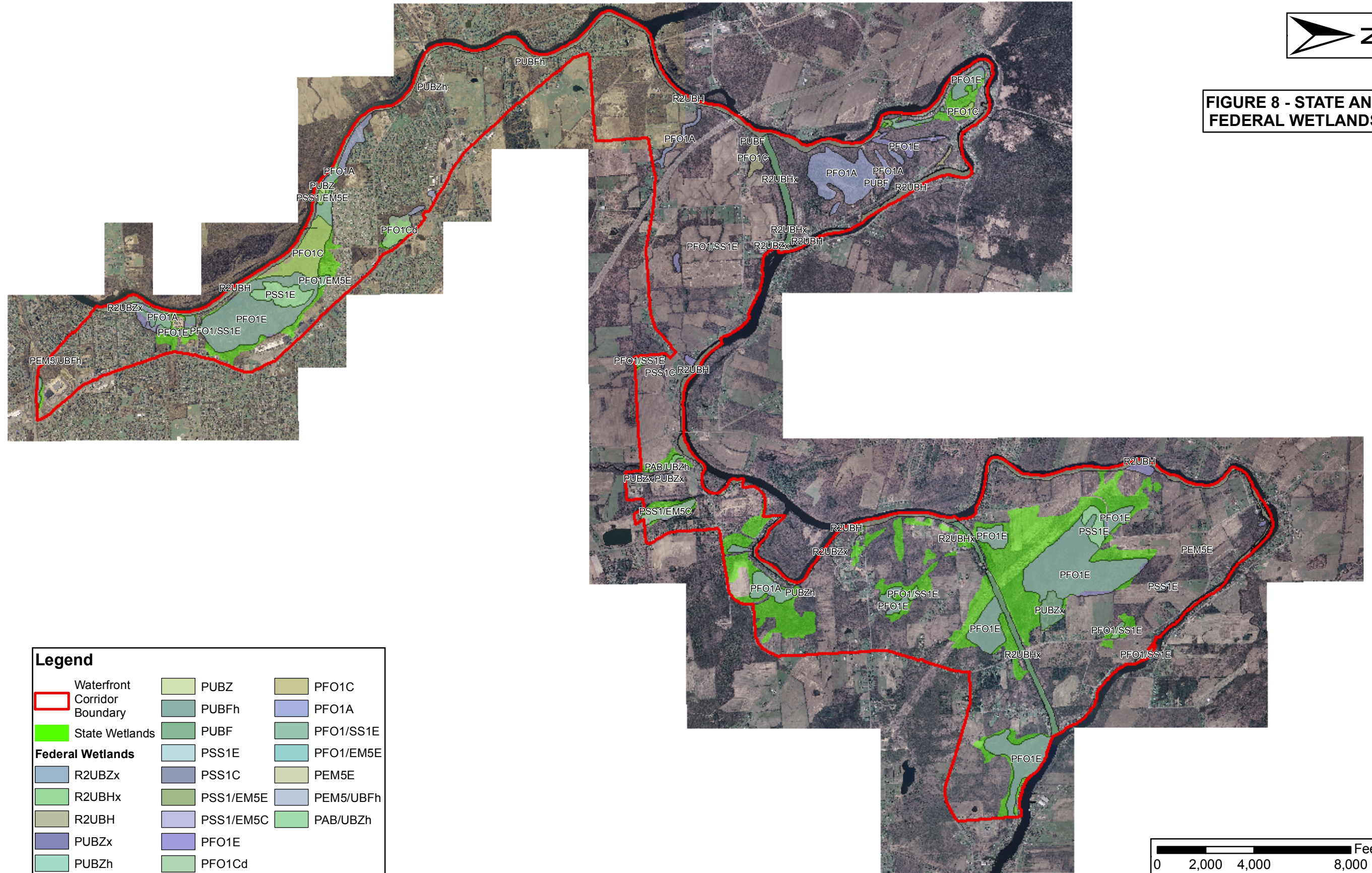
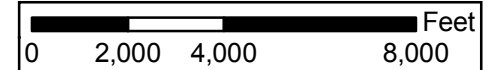


FIGURE 8 - STATE AND FEDERAL WETLANDS



Legend		
	Waterfront Corridor Boundary	
	State Wetlands	
Federal Wetlands		
	R2UBZx	
	R2UBHx	
	R2UBH	
	PUBZx	
	PUBZ	
	PUBFh	
	PUBF	
	PSS1E	
	PSS1C	
	PSS1/EM5E	
	PSS1/EM5C	
	PFO1C	
	PFO1A	
	PFO1/SS1E	
	PFO1/EM5E	
	PEM5E	
	PEM5/UBFh	
	PAB/UBZh	
	PFO1E	
	PFO1Cd	



2006225
February 2008

New York State Department of Environmental Conservation - State Wetland Maps, 1973 and 1975 editions.
U.S. Department of the Interior, Fish and Wildlife Service - Federal Wetland Maps, 1978 and 1981 editions.

TOWN OF CLAY - LOCAL WATERFRONT REVITALIZATION PROGRAM

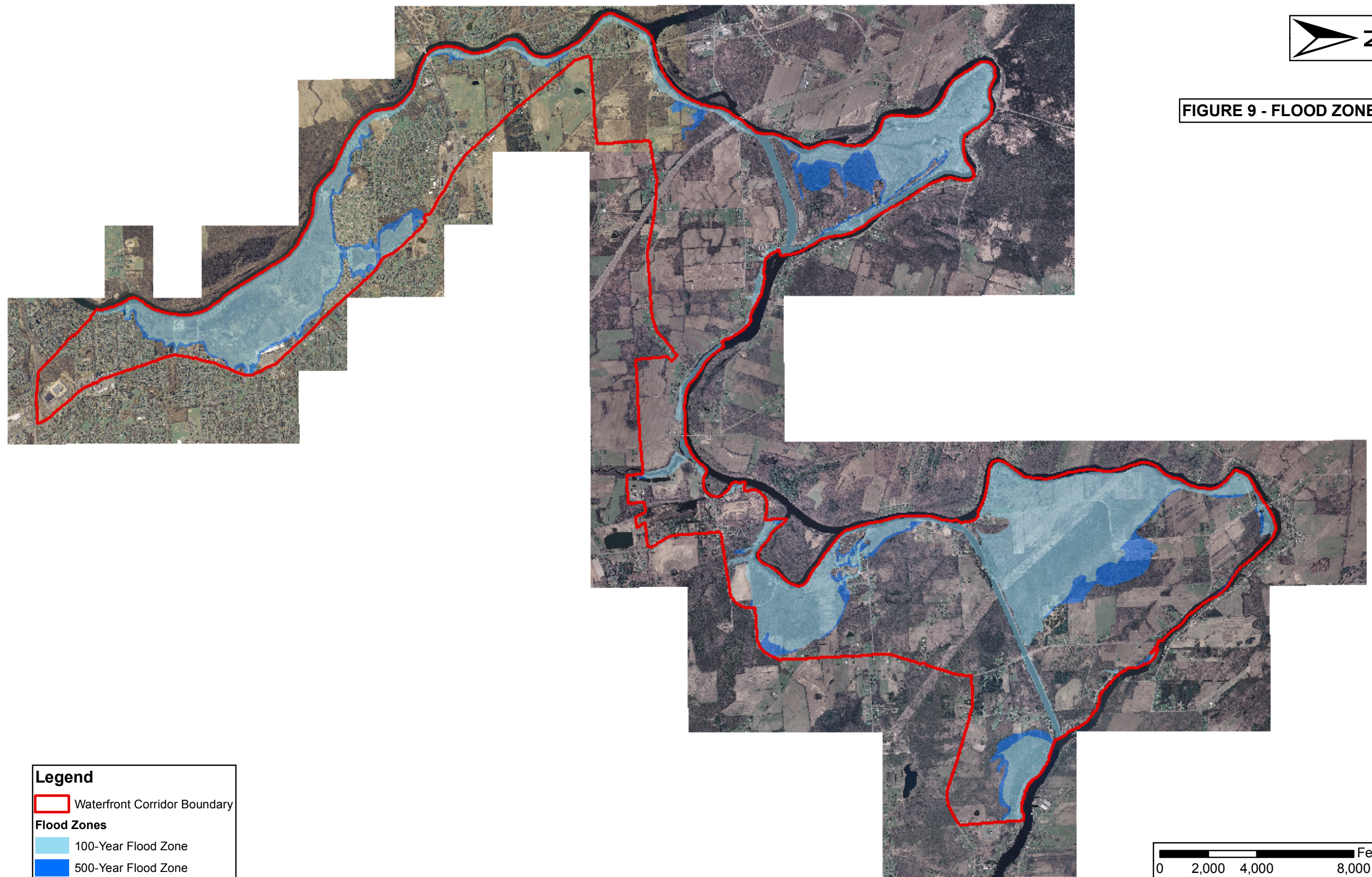


FIGURE 9 - FLOOD ZONES

Legend

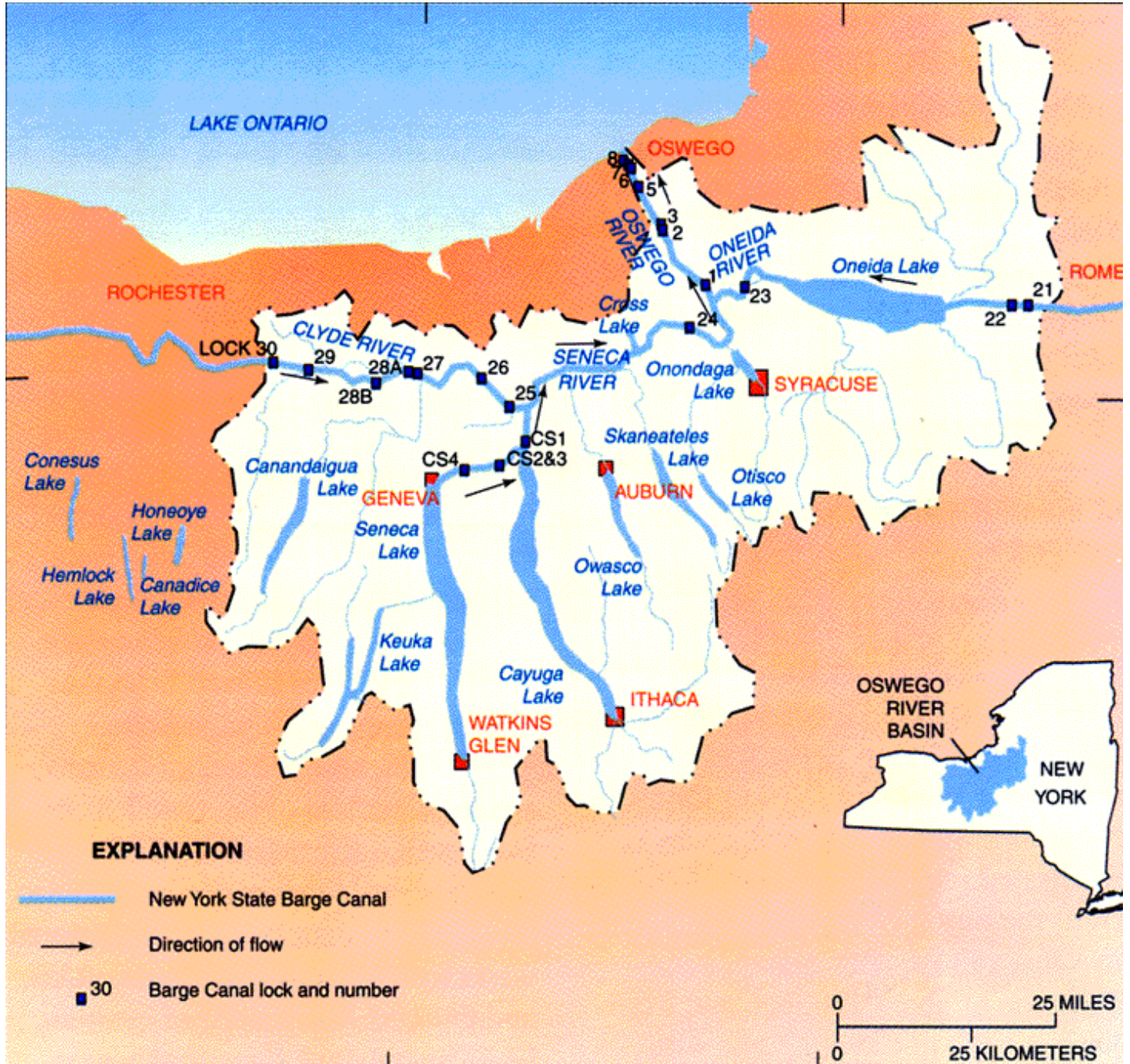
- Waterfront Corridor Boundary
- Flood Zones**
 - 100-Year Flood Zone
 - 500-Year Flood Zone



2006225
February 2008

TOWN OF CLAY - LOCAL WATERFRONT REVITALIZATION PROGRAM

FIGURE 10 - OSWEGO RIVER BASIN



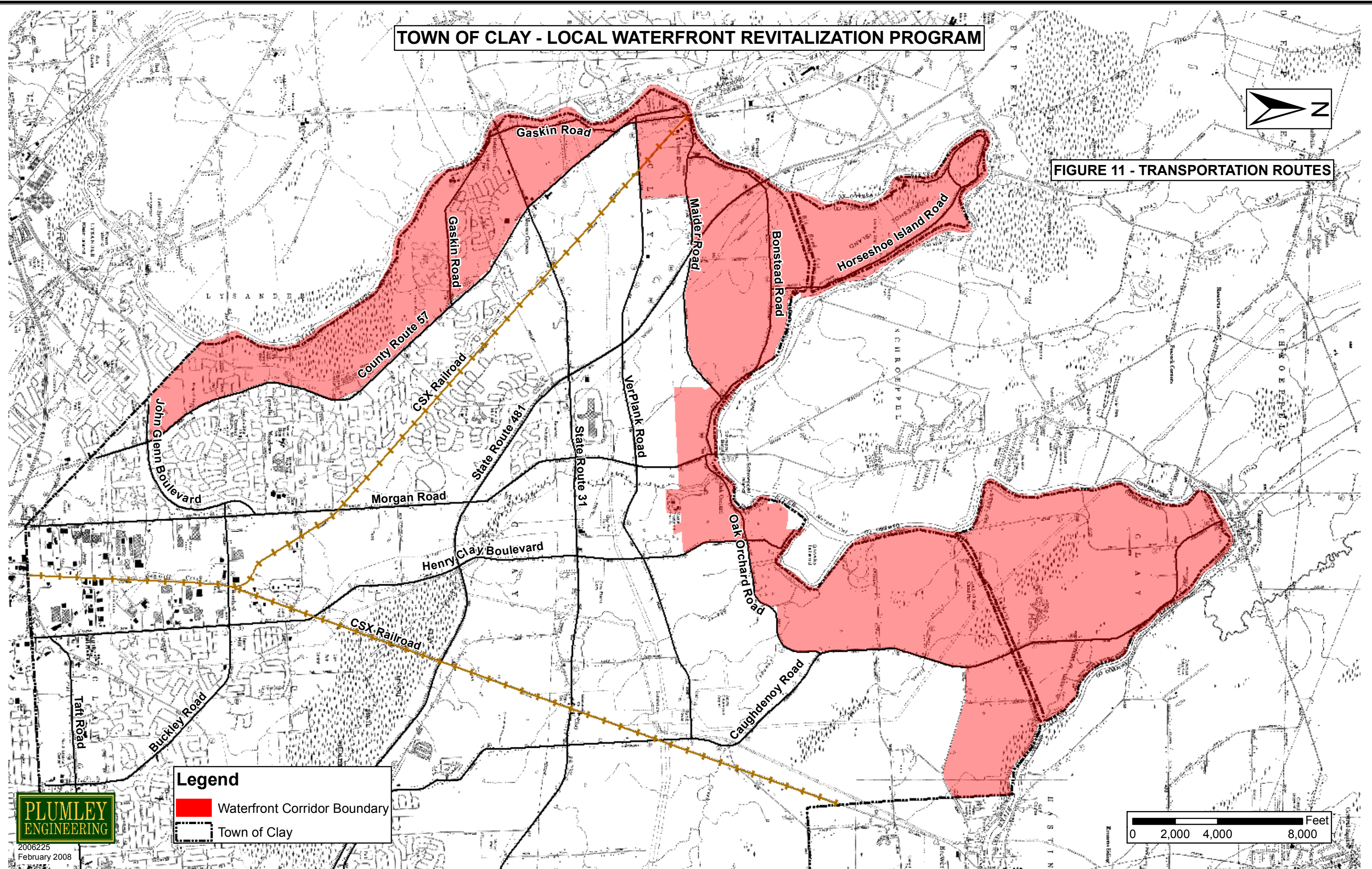
2006225
February 2008

USGS Figure - Location of Major Lakes and Rivers, New York State Barge Canal, and Major Cities within the Oswego River Basin in Central New York, Fact Sheet FS 180-99, February 2002.

TOWN OF CLAY - LOCAL WATERFRONT REVITALIZATION PROGRAM



FIGURE 11 - TRANSPORTATION ROUTES



Legend

- Waterfront Corridor Boundary
- Town of Clay



2006225
February 2008

DOT Topographic Maps, Planimetric Data - Baldwinsville, Brewerton, Central Square, Syracuse West, Camillus, and Pennellville 7.5-Minute Quads.

TOWN OF CLAY - LOCAL WATERFRONT REVITALIZATION PROGRAM

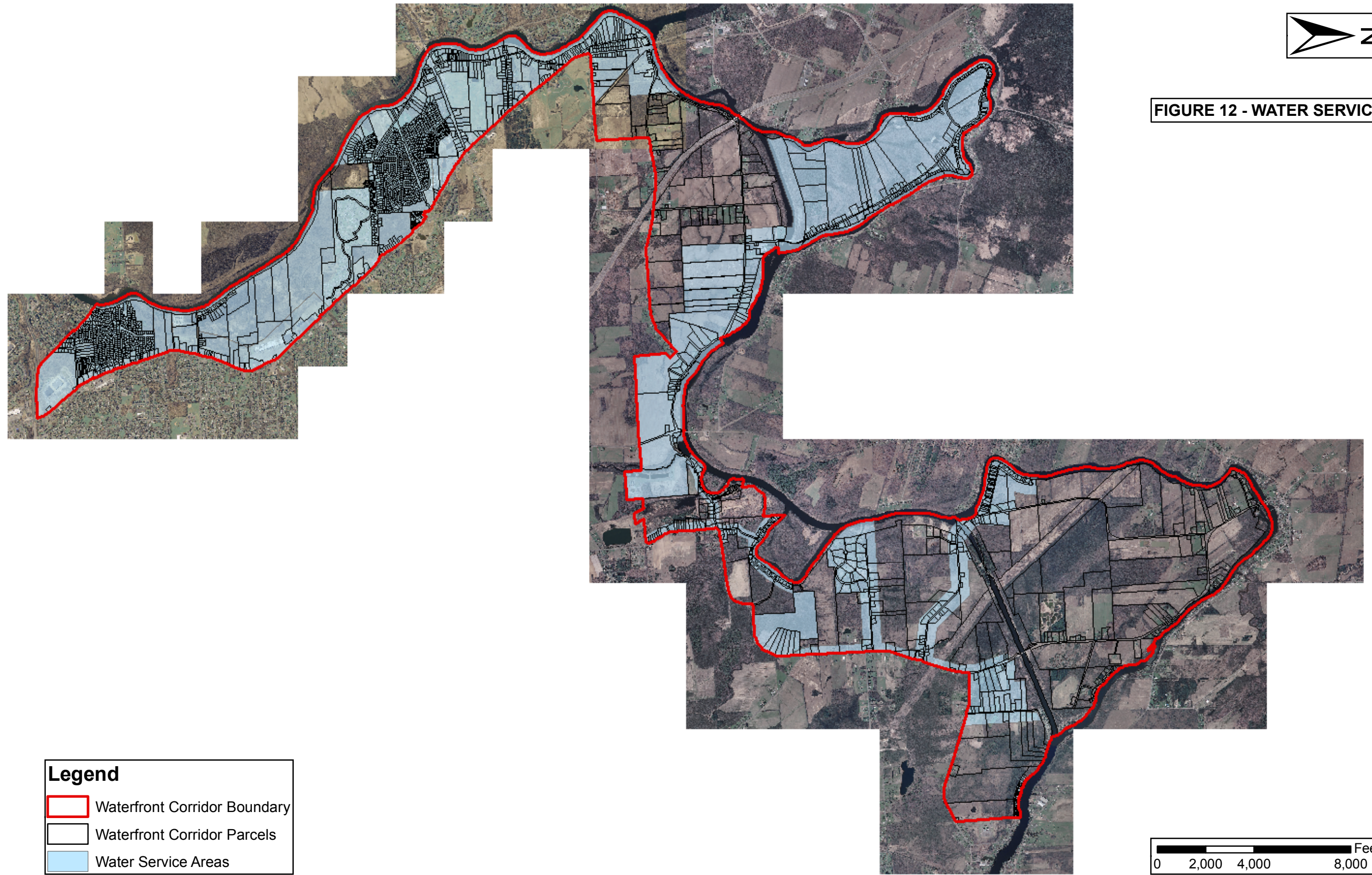


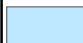


FIGURE 12 - WATER SERVICE

Legend

-  Waterfront Corridor Boundary
-  Waterfront Corridor Parcels
-  Water Service Areas



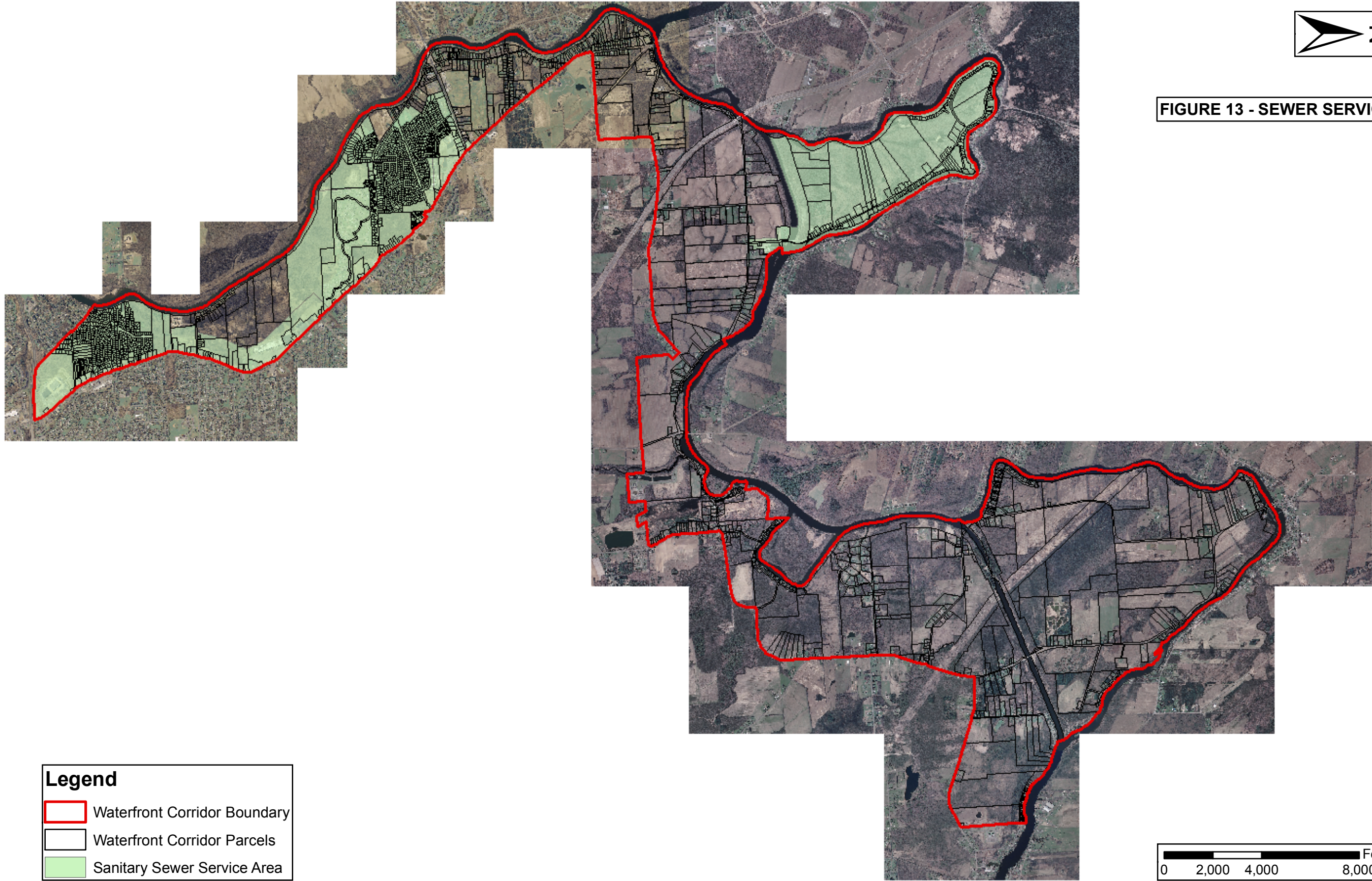
2006225
February 2008

Water Service Area and Parcel Data provided by the Town of Clay.
NYS GIS Clearinghouse - Town of Clay, Onondaga County, New York, 1-Foot Resolution Natural Color Orthoimagery, April 2006.




TOWN OF CLAY - LOCAL WATERFRONT REVITALIZATION PROGRAM

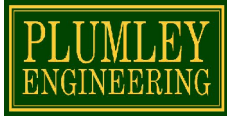
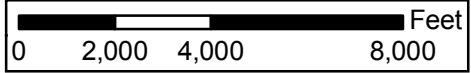


FIGURE 13 - SEWER SERVICE



Legend

-  Waterfront Corridor Boundary
-  Waterfront Corridor Parcels
-  Sanitary Sewer Service Area



2006225
February 2008

Sanitary Sewer Service Area and Parcel Data provided by the Town of Clay.
NYS GIS Clearinghouse - Town of Clay, Onondaga County, New York, 1-Foot Resolution Natural Color Orthoimagery, April 2006.

TOWN OF CLAY - LOCAL WATERFRONT REVITALIZATION PROGRAM

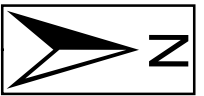
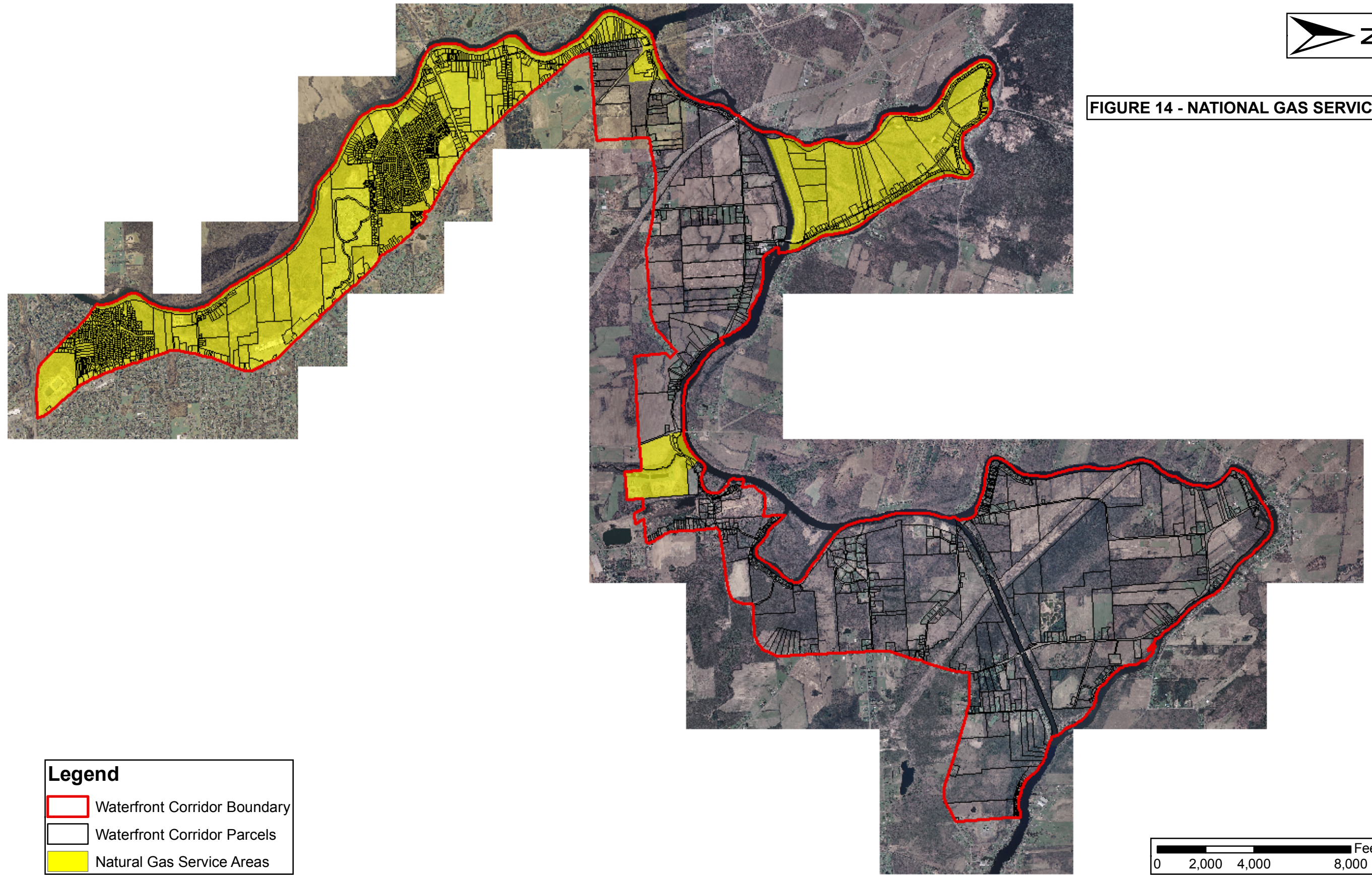





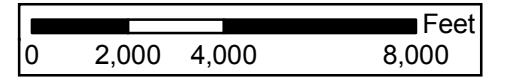
FIGURE 14 - NATIONAL GAS SERVICE

Legend

-  Waterfront Corridor Boundary
-  Waterfront Corridor Parcels
-  Natural Gas Service Areas



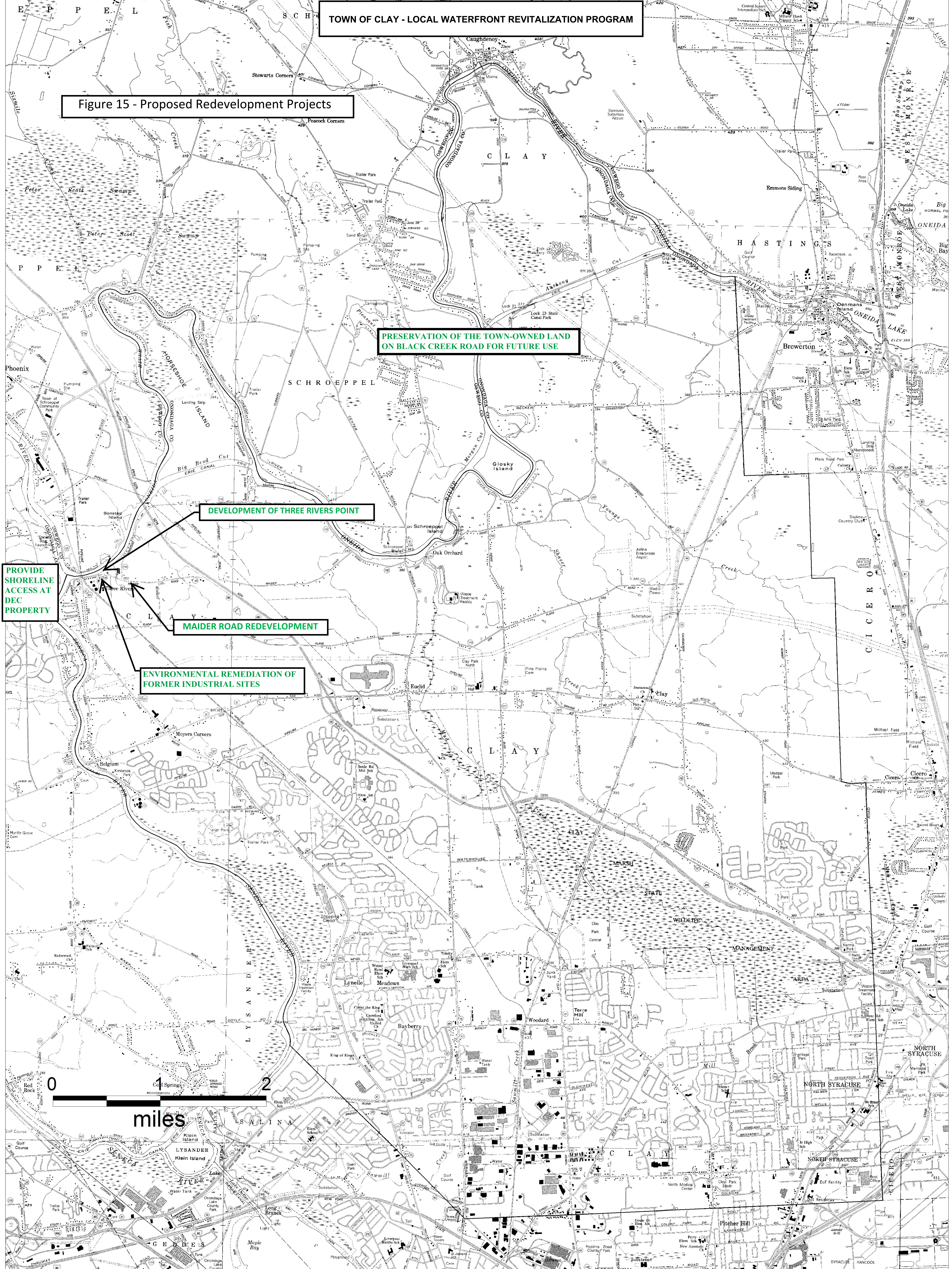
2006225
February 2008



Natural Gas Service Area data provided by National Grid.
Parcel Data provided by the Town of Clay.
NYS GIS Clearinghouse - Town of Clay, Onondaga County, New York, 1-Foot Resolution Natural Color Orthoimagery, April 2006.

TOWN OF CLAY - LOCAL WATERFRONT REVITALIZATION PROGRAM

Figure 15 - Proposed Redevelopment Projects



PRESERVATION OF THE TOWN-OWNED LAND ON BLACK CREEK ROAD FOR FUTURE USE

DEVELOPMENT OF THREE RIVERS POINT

PROVIDE SHORELINE ACCESS AT DEC PROPERTY

MAIDER ROAD REDEVELOPMENT

ENVIRONMENTAL REMEDIATION OF FORMER INDUSTRIAL SITES









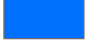

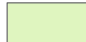

TOWN OF CLAY - LOCAL WATERFRONT REVITALIZATION PROGRAM

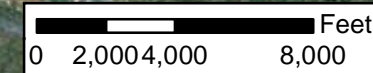


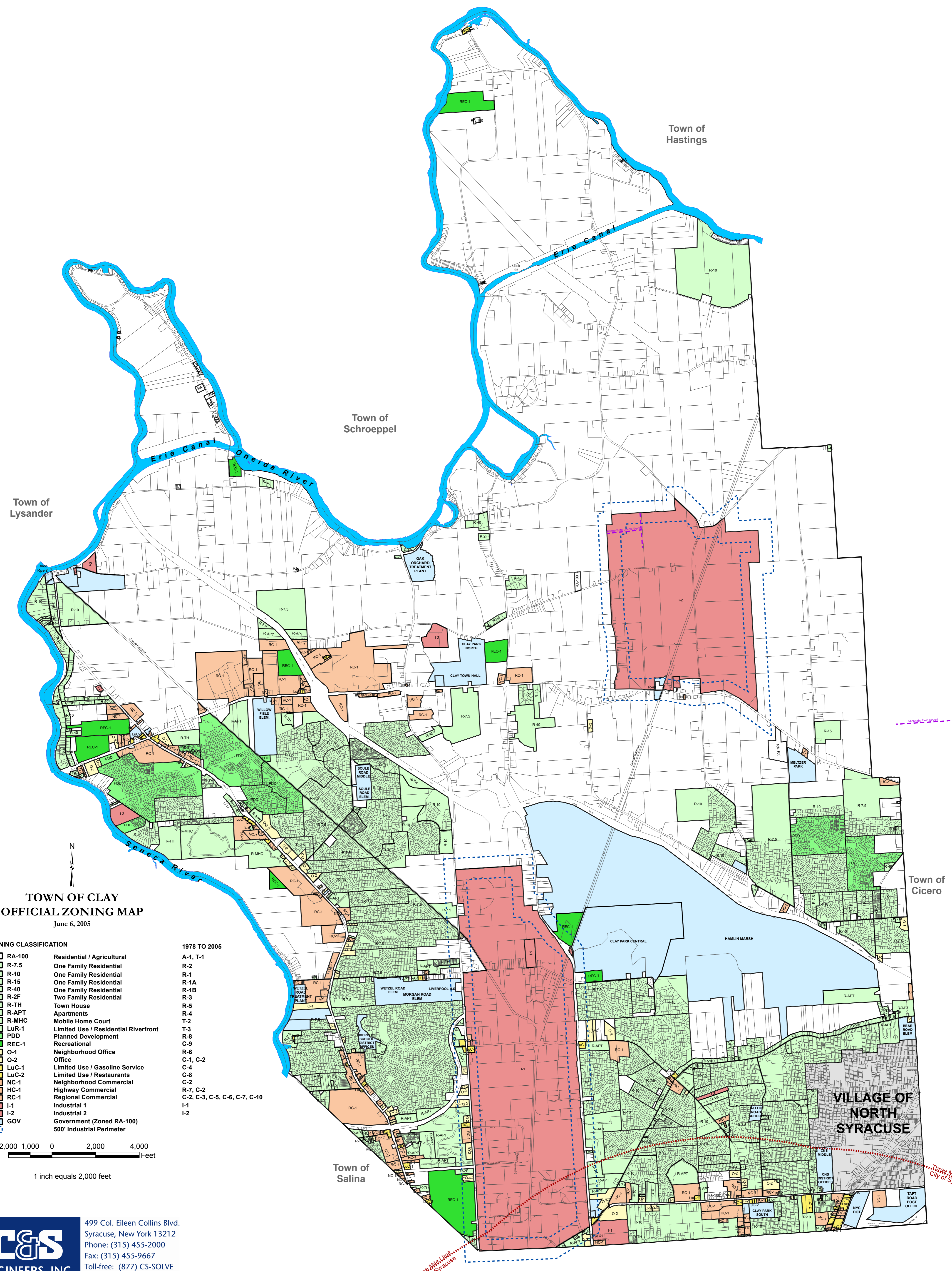
FIGURE 16 - WATERFRONT CORRIDOR
PROPOSED FUTURE LAND USE

Legend

Land Classification

 Recreational	 Municipal/State
 Agricultural	 Residential
 Commercial	 Undeveloped/Vacant
 Educational/Religious	 Wooded
 Urban Waterfront Mixed Use Development	
	 Waterfront Corridor Boundary





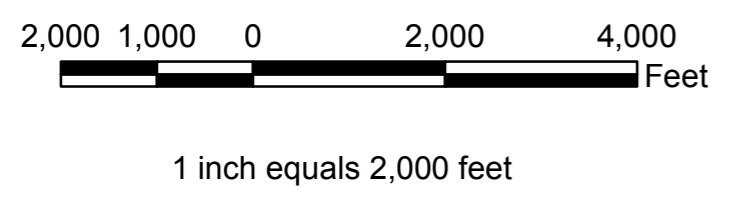
**TOWN OF CLAY
OFFICIAL ZONING MAP**
June 6, 2005

ZONING CLASSIFICATION

RA-100	Residential / Agricultural
R-7.5	One Family Residential
R-10	One Family Residential
R-15	One Family Residential
R-40	One Family Residential
R-2F	Two Family Residential
R-TH	Town House
R-APT	Apartments
R-MHC	Mobile Home Court
LuR-1	Limited Use / Residential Riverfront
PDD	Planned Development
REC-1	Recreational
O-1	Neighborhood Office
O-2	Office
LuC-1	Limited Use / Gasoline Service
LuC-2	Limited Use / Restaurants
NC-1	Neighborhood Commercial
HC-1	Highway Commercial
RC-1	Regional Commercial
I-1	Industrial 1
I-2	Industrial 2
GOV	Government (Zoned RA-100) 500' Industrial Perimeter

1978 TO 2005

A-1, T-1
R-2
R-1
R-1A
R-1B
R-3
R-5
R-4
T-2
T-3
R-8
C-9
R-6
C-1, C-2
C-4
C-8
C-2
R-7, C-2
C-2, C-3, C-5, C-6, C-7, C-10
I-1
I-2



C&S ENGINEERS, INC.
499 Col. Eileen Collins Blvd.
Syracuse, New York 13212
Phone: (315) 455-2000
Fax: (315) 455-9667
Toll-free: (877) CS-SOLVE
www.cscos.com

K:\NY\Onondaga\Clay\Projects\ArcGIS\Zoning_20050601.mxd